

"It's amazing how I can now look at my students with such detail. The VDC staff has been a wonderful support through this entire process!"

– Brucie Donahue, Educational Technologist
Northfield School District

VDC Differentiated Memberships

BASIC: Includes 3 "central office" user accounts and trainings for:

- ✓ Superintendent;
- ✓ Business/HR Manager; and
- ✓ Curriculum/Tech Dir./Data Mgr.

Additional user accounts can be purchased to supplement the BASIC membership.

COMPREHENSIVE:

- ✓ unlimited user accounts at the SU/SD and school level
- ✓ unlimited VDC-hosted user trainings

PREMIUM: Includes all the benefits of the Comprehensive membership PLUS

- ✓ a Local Data Warehouse built for your SU/SD
- ✓ up to 8 days of data services (5 on-site) by a VDC staff member



www.vermontdata.org

VDC offers **additional services** including:

Consulting

- Data mining or pre-Action Planning
- Data-driven program evaluations
- Evidence-based school leadership
- Local assessment plan development

Data Services

- Development of local data collection systems
- Data 'scrubbing'

Trainings

- Contracted local or regional user trainings & user groups

VDC Staff

Amy Cole, Executive Director
John Ferrara, Data Coordinator
John Forguites, Data Technician
George Raynak, Trainer/Data Support

VDC Board of Directors

Bill Kimball, LSSU (Chair)
Bob Owens, ANWSU (Co-chair)
Wendy Baker, OESU (Treasurer)
Aria Benjamin, WWSU (Secretary)
Mary Helen Hart, FNESU
Chris Kibbe, WNESU

VT Department of Education

Denise Sanders,
DOE Project Manager

250 Main Street, Suite 202; Montpelier, VT 05602
802-224-9110; info@vdcmembers.org

www.vermontdata.org

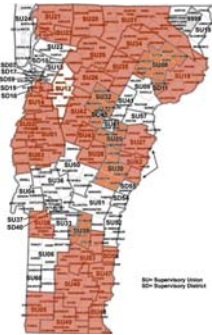
Vermont Data Consortium



"The data warehouse has allowed me to have quick access to data that would have taken hours to calculate before. With it we are providing more data and in a more timely way than ever before."

– Bob McNamara, Superintendent
Washington West Supervisory Union

Vermont Data Consortium (VDC) is a statewide collaborative, founded by its members, to deliver an education data warehouse, data analysis tools, and training for evidence-based school improvement. The goal of VDC is to ensure that Vermont supervisory unions/districts have cost-effective, timely and accurate student and educational data available to address continuous school improvement as well as state and federal accountability and reporting requirements. To accomplish this goal VDC partnered with the **Vermont Department of Education (VTDOE)** and **TetraData Corporation**.



2007/08 VDC Membership

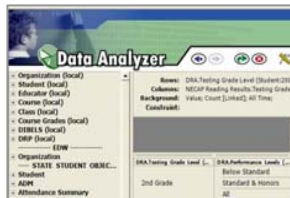
- | | |
|--------------------|---------------------|
| Addison Central | Orleans Essex North |
| Addison Northeast | Orleans Southwest |
| Addison Northwest | Rutland Windsor |
| Caledonia North | South Burlington |
| Chittenden South | Southwest Vermont |
| Essex Caledonia | Springfield |
| Franklin Central | St. Johnsbury |
| Franklin Northeast | Washington Central |
| Franklin Northwest | Washington South |
| Lamoille North | Washington West |
| Lamoille South | Windham Central |
| Orange East | Windham Northeast |
| Orange North | Windham Southeast |
| Orange Windsor | Windham Southwest |
| Orleans Central | Windsor Southwest |

Education Data Warehouse (EDW) is the VDC database which includes organization, school and student data including student census, state assessments, school finances, teacher licensure and more.

Users can.....log on via the web to a secure server maintained by VDC and VTDOE staff...



... access student and school data as well as public information about other Vermont schools...



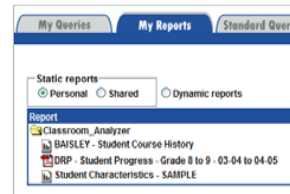
... drill down through the data to see student lists...

LAOUE, F. M.
UNGERER, R. K.
WERTMAN, C. A.
WILEY, R. M.
BIBONA, E. F.
BRINZO, L. K.
AJAMIE, B. G.

Administrative ID Scrambled Student, Oct 1 Grade Level: 2001-2002, 2002-2003, 2003-2004, 2004-2005, 2005-2006
Select (Link) Results:

	Year					
	2000-2001	2001-2002	2002-2003	2003-2004	2004-2005	2005-2006
7th Grade	185	166	184	171	154	141
8th Grade	176	165	170	184	177	141
9th Grade - H.S. Prep.	197	187	176	177	181	141
10th Grade - H.S. Sep.	180	205	175	179	181	141
11th Grade - H.S. Jun.	159	172	202	188	175	141

.... and save reports to a main 'portal' to be accessed at any time by your users.



Local Data Warehouse is an additional tool which allows users to cross-query state data with local assessments, local student or program indicators and individual teacher class lists.

Course (local).Course Nam...	NSRE Math Performance Levels.Performance Levels (Stu...	
	Below Standard	Met Standard
Algebra II		100.00 %
Geometry		100.00 %
Algebra 1	11.86 %	88.14 %
Pre-Algebra	41.82 %	58.18 %
Foundations for Pre-A...	90.00 %	10.00 %
Consumer Math	100.00 %	

Districts can import local data including POA, Gates McGinnitie, DRP, Dibels, Sat-9, Sat-10, Terra Nova, portfolios scores, custom-developed local assessments, Standard or GE-based indicators, class/course lists, grades, attendance, discipline and program indicators (ex: Reading Recovery, Reading First, extracurricular participation, etc.

“We needed to examine our math NECAP scores to determine what classes/scheduling was best for different groups of students. The EDW local warehouse has allowed us to look at student learning, school processes and demographic data together as multiple measures. Through the inclusion of our student information system data and local assessments we can examine programs and processes to determine the strengths and weaknesses of course schedules and offerings, content area programs, and professional development.”
 – Jan Willey, Associate Superintendent & Patricia Aigner, Technology Director Addison Central Supervisory Union