



Introduction to the EDW and Workshop Guiding Questions

Last Revised - 11/14/2011

EDW Introduction

1 You can access the EDW from work or home, but please use your best “FERPA habits” so you don’t accidentally save sensitive information about students in any public place on your personal computer or a network drive.



2 To access the **EDW reports** you can use a Mac, a Windows PC, a tablet or smart phone and any popular browser - Internet Explorer, Firefox, Chrome or Safari. To access the **EDW reports** and the **Analyzer PC query tool** you need to use a Windows PC with Internet Explorer or Firefox as the browser. *(Note: Mac users can run Windows on their Mac by creating a “Boot Camp” partition and booting to Windows or running a “virtual” version of Windows using Parallels or VMware.)*

Operating System	Individual Student & Roster PDF Reports	Analyzer PC	Analyzer Web*
		N/A - Unknown	

*Analyzer Web is accessible from all browsers but is rarely used due to its less user-friendly interface.

3 Login to the VDC website at <http://www.vermontdata.org> and click on the “EDW Login” link or bookmark the login page directly <https://edwa.vermont.gov/analysis/>. *(Note: You don’t need to type anything in “Site”.)*

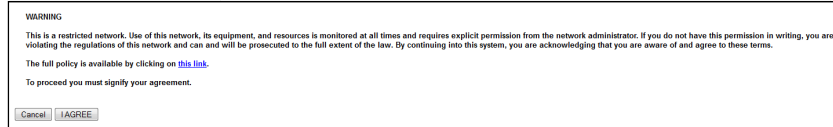




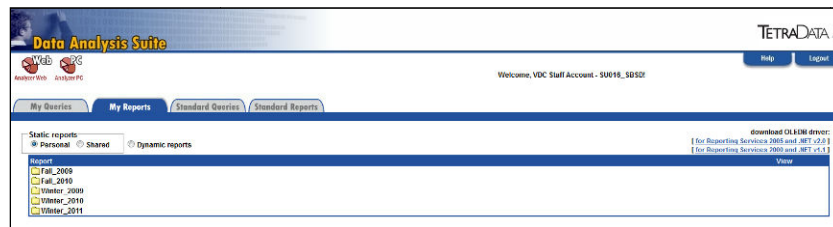
Introduction to the EDW and Workshop Guiding Questions

Last Revised - 11/14/2011

4 Every time you login to the EDW you will be reminded that you are entering a system where you might be able to access confidential information. This is the “be-a-good-FERPA-citizen” reminder. You must “agree” every time.

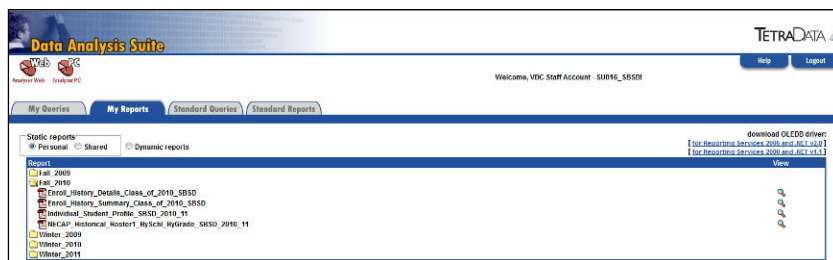


5 You are now at the main “portal”. For here you can access PDF reports from the “My Reports” tab or launch the Analyzer PC applications. There is also an “Analyzer Web” application which has all the functionality of Analyzer PC, but since it is a web/browser application it is not as user-friendly as Analyzer PC and few folks use it.



6 There are currently four reports available in the “My Reports” area. These reports are typically updated twice a year – once in the fall and once in the winter.

- The “*NECAP_Historical_Roster*” report provides a by-grade roster of students and their historical NECAP scaled scores and achievement levels.
- The “*Individual_Student_Profile*” report provides one (or two) pages of additional detail on each student. NECAP content area scores are shown as well as any historical DRA and NSRE data for students that may have taken these discontinued state assessments. In addition, the student enrollment history section gives you a sense of the student’s “mobility”.
 - These two student reports have a demographics section that does not have a key to help protect student confidentiality. The key is *G=Gender, F=Free/Reduced Lunch, S=SPED, E=EST, 5=504*. If the square is shaded the student is a “yes” in that category based on the most recent data reported to the Department of Education.
- The other two reports “*Enrollment_History*” reports are for high school staff only and provide information on previous graduating classes. The summary report, in particular, provides a nice overview of how many students from the original 9th grade class stayed enrolled at the high school for all four years and graduated on time.



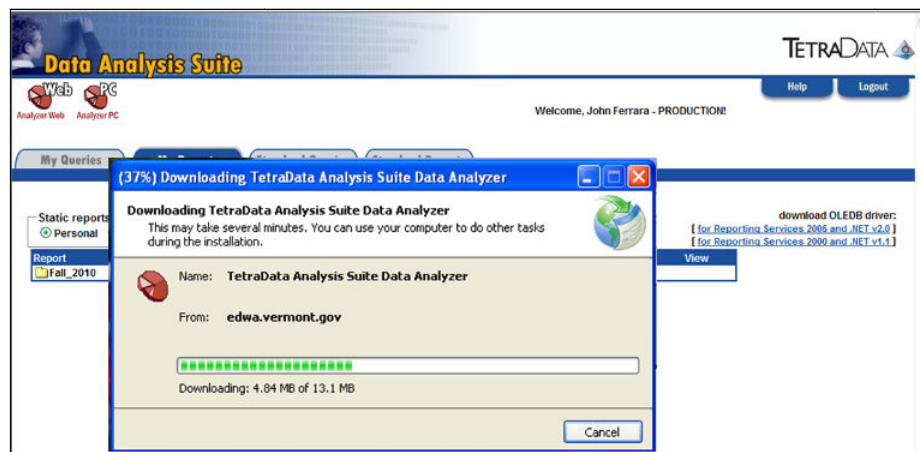
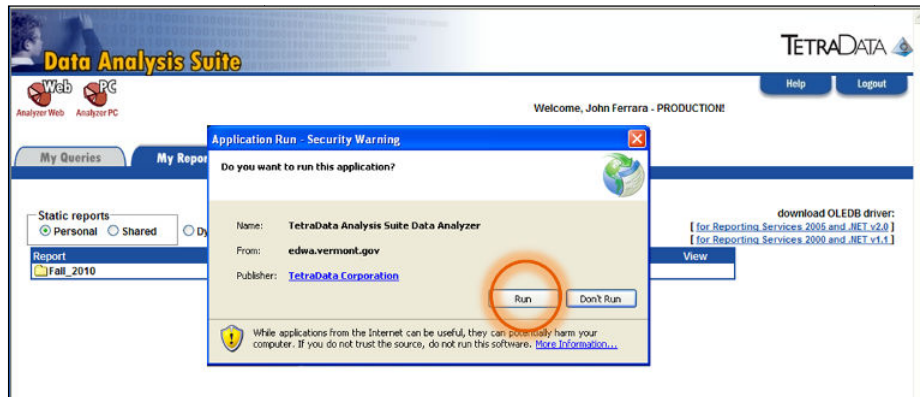
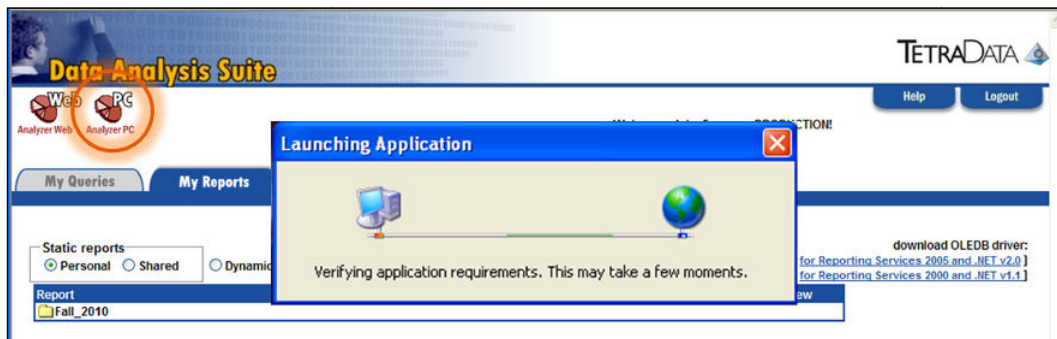


Introduction to the EDW and Workshop Guiding Questions

Last Revised - 11/14/2011

7 When it is time to use the Analyzer PC application for the first time, there is an installation process. You only need to go through this process if you are accessing the EDW from a certain computer for the first time **or** if the EDW software has an upgrade. Most of the time this process is quick and painless; however, there are situations where you may run into an issue. For instance, if you are using a 64-bit version of Windows 7 you will need to use the 32-bit version of Internet Explorer. You may also still need to disable ‘protected mode’ or other security settings if the download does not work properly. Your IT staff should be able to help you troubleshoot issues unique to your computer’s setup. If not, they will contact VDC staff. Firefox users need to go to <https://addons.mozilla.org/en-US/firefox/addon/microsoft-net-framework-assist/> to download and install the Microsoft .NET add-in for Firefox.

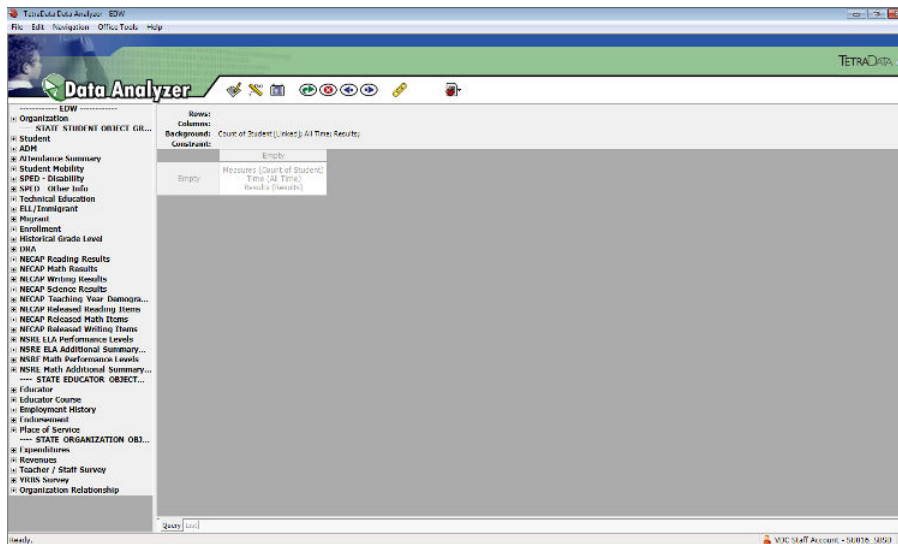
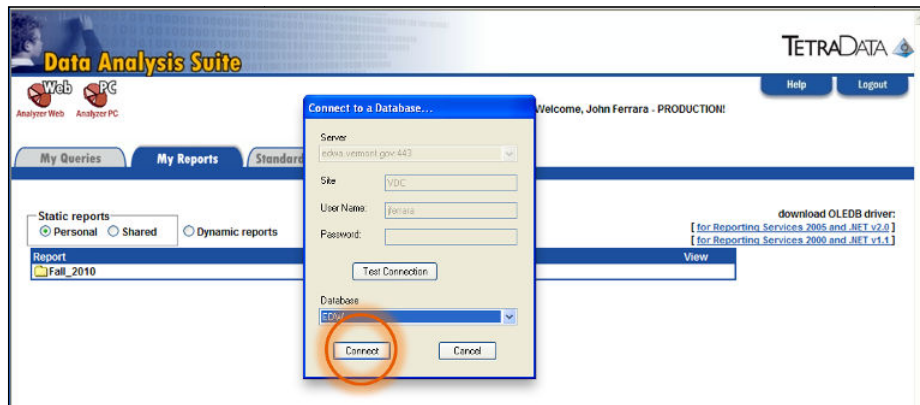
Below is a series of screen shots which shows the steps you will go through the first time you launch Analyzer PC.





Introduction to the EDW and Workshop Guiding Questions

Last Revised - 11/14/2011



8 The EDW Basic (http://www.vermontdata.org/memdocs/documents/VT_Analyzer_PC_Questions_5_4.doc) and Advanced (http://www.vermontdata.org/memdocs/documents/VT_Analyzer_PC_Questions_5_4_Advanced.doc) manuals are available on the VDC website under the “Training Documents” link, but here’s a quick overview to get you started.



Introduction to the EDW and Workshop Guiding Questions

Last Revised - 11/14/2011

Creating a Simple Query

1. Define your query in words
2. Select your measure
3. Set the Time Parameters
4. Define the rows and columns
5. Run the query

Helpful Hints

1. Use "Organization Name" in the "Organization" object to aggregate by school.
2. Use "Administrative Name" in the "Organization" object to aggregate by SU/SD.
3. Students are enrolled in "schools", so look for school names for student queries
4. Teachers are employed by "districts", so look for town/union district names for teacher queries.

Right-click on any **object** and select **Properties**

Right-click on the **Query, List and Graph Tabs**

Right-click menu if you click on the **Row or Column Coordinates**

Right-click menu if you click on the **Data Grid**

Right-click menu if you click in the **Design Area**



Introduction to the EDW and Workshop Guiding Questions

Last Revised - 10/14/2011

Workshop Guiding Questions

1. Has the official October 1st enrollment for my school changed since 2003-2004?
 - Heart Icon>Shared>[Your SU]>VDC Workshop>Oct1_Enroll_Since_0304_Starter
 - “Organization” object > “Organization Name” attribute
2. Has the percentage of students receiving free or reduced lunch changed since 2003-2004?
 - “Student” object > “FRL Flag” attribute – Right-click>Display>%Down
3. Has the percentage of students receiving special education services changed since 2003-2004?
 - SPED-Other Info” object > “SPED Flag” attribute
4. Is there a gender difference in special education rates?
 - “Student” object > “Gender” attribute
5. Has the percentage of mobile students with “at least 1 non-promotional move” changed since 2003-2004?
 - “Mobility” object > “Mobility Type” attribute
6. Has the student attendance rate for my school changed since 2003-2004?
 - Heart Icon>Shared>[Your SU]>VDC Workshop>Attendance_Rate_Starter
7. Is there a gender difference in student attendance rates?
 - “Student” object > “Gender” attribute
8. How many students enrolled in my school in Grade “X” in school year “Y” are still currently enrolled?
 - Heart Icon>Shared>[Your SU]>VDC Workshop>Longitudinal_Enroll_TimeSet_Constraint
9. What is the NECAP Reading performance for all students in my school for all NECAP years?
 - Heart Icon>Shared>[Your SU]>VDC Workshop> OverTime_Rdg
 - Pick school(s) from NECAP “Teaching School” or “Testing School” attributes
10. What is the most recent NECAP Reading performance for males? Males in special education? Male, special education and free or reduced lunch?
 - If “Teaching Year” use demographics in “Teaching Year Demographics” object
 - If “Testing Year” use demographics in “Student” and “SPED – Other Info” objects
11. How did a cohort of students who stayed in your school for the next “X” years do in NECAP Reading? Math? Mean Scaled Score instead of Achievement Level?
 - Heart Icon>Shared>[Your SU]>VDC Workshop>Cohort_MultiYear_Rdg
12. How did Grade 6 students from K-6 schools do on NECAP Reading when they were now in different schools in Grade 8? Math?
 - Heart Icon>Shared>[Your SU]>VDC Workshop>Cohort_Rdg_Gr6_to_Gr8
13. How did Grade 8 students from K-8 or middle schools do on NECAP Reading when they were now in different schools? Math? Writing? Science?
 - Heart Icon>Shared>[Your SU]>VDC Workshop>Cohort_Rdg_Gr8_to_Gr11