

This tool will process a comma separated text file of data for a number of possible problems

### Duplicates

The number of duplicate records based on specific fields is reported based on the combination of fields

### Missing Child Records

A report shows

### Orphan Records

### Incorrect Enumerations

A report shows if improper values have been entered in a field. Such as Male instead of M in the Gender field

### Using the EDW CDM DEA

**Education Data Warehouse  
Common District Model Data Extract Analyzer**

This tool reviews data extracts for duplicates, missing child records, orphan records, and incorrect enumerations. Although this tool will identify many common errors, some errors may not be identified until a EDW load is attempted.

**Step 1 - Configure Tool For Your Site**

\*Click\* to Go to Config Menu Required items must be updated for each VDC Site/user in order for tool to function.

**Step 2 - Import Data**

\*Click\* to Import Data Items to import must be "checked" in Edit Control Table in the Config Menu. Do not forget to check the year(s) you are loading. (Note: For ease of use, It is recommended that you import and analyze only one school year at a time.)

**Step 3 - Analyze Data**

\*Click\* to Analyze Data Items to analyze must be "checked" in Edit Control Table in the Config Menu

**Step 4 - Review Results**

\*Click\* to Export Error Logs to MS EXCEL Allows user to view error log in MS Excel. Old extracts will be overwritten if they remain in directory.

\*Click\* to View Error Logs in MS ACCESS MS Access report containing the same information included in the Excel extracts. Default setting will print reports. Check "Preview" if you would like to preview to screen. MS Access reports provide a more formatted look and may be easier to review.

Preview Reports

**Step 5 - Exit Application**

\*Click\* to Exit Application

Open "Known Issues" Form

Version 1.3.2, March 30, 2006

Developed by the VT Dept of Education for our VDC partners.

Record: 1 of 1  
Form View

NOTE: Please click the Open "Known Issues" Form before you use this tool

### Step 1 – Configure the Tool for your Site

Click the button to go to Config. Menu

## Required Configuration Information

- Edit Control Table-** Identify the extracts you would like to import and analyze. Enter the file path of the files to be imported. This table must be configured for each VDC site.
- Extract Dest. Path-** Enter the destination path for Extract Error logs. This table must be configured for each VDC site.

## Optional Configuration Information

- ReportControl-** Edit to control the print order and default setting for reports printed from above menu item. Do not change without instructions from VDC tech support.

[Return to Main Menu](#)

Click on the Edit Control Table button

Control Table Stores Information Needed to Import and Analyze Data Extracted for EDW Import

ObjectName	TableName	Check to Load	RawDataPath	BaseFileName	ImportSpecName
▶ L_CLASS	L_CLASS	<input checked="" type="checkbox"/>	Z:\WDC\SUxxx_xx\SU\CORE\	L_Class	L_Class_Import_Specifica
L_COURSE	L_COURSE	<input checked="" type="checkbox"/>	Z:\WDC\SUxxx_xx\SU\CORE\	L_Course	L_Course_Import_Specific
L_COURSE_GRADE	L_COURSE_GRADE	<input checked="" type="checkbox"/>	Z:\WDC\SUxxx_xx\SU\PARA\	L_Course_Grade	L_Course_Grade_Import_
L_EDUCATOR	L_EDUCATOR	<input checked="" type="checkbox"/>	Z:\WDC\SUxxx_xx\SU\CORE\	L_Educator	L_Educator_Import_Speci
L_LOCAL_ASSESSMENT_1	L_ASSESSMENT_1	<input checked="" type="checkbox"/>	Z:\WDC\SUxxx_xx\SU\TEST\	L_Assessment_1	L_Assessment_Import_Sp
L_LOCAL_ASSESSMENT_2	L_ASSESSMENT_2	<input checked="" type="checkbox"/>	Z:\WDC\SUxxx_xx\SU\TEST\	L_Assessment_2	L_Assessment_Import_Sp
L_ORGANIZATION	L_ORGANIZATION	<input checked="" type="checkbox"/>	Z:\WDC\SUxxx_xx\SU\CORE\	L_Organization	L_Organization_Import_Sp
L_SCHEDULE	L_SCHEDULE	<input checked="" type="checkbox"/>	Z:\WDC\SUxxx_xx\SU\CORE\	L_Schedule	L_Schedule_Import_Spec
L_STUDENT	L_STUDENT	<input checked="" type="checkbox"/>	Z:\WDC\SUxxx_xx\SU\CORE\	L_Student	L_Student_Import_Specific
L_SURVEY_RESPONSE	L_SURVEY_RESPONSE	<input checked="" type="checkbox"/>	Z:\WDC\SUxxx_xx\SU\TEST\	L_Survey_Response	L_Survey_Response_Impr
SECURITY	TBLSECURITY	<input type="checkbox"/>		L_Security	
*		<input checked="" type="checkbox"/>			

Record: 1 of 11

[Return to Config Setup](#)

[Return to Main Menu](#)

The ObjectName and TableName are pre-configured for the VDC Common Data Model  
Use the Check to Load boxes to control which files are loaded for analysis  
Define the location of each Object file in the RawDataPath column.  
The BaseFileName and ImportSpecName are pre-defined for the CDM  
Check the appropriate boxes to designate the years of data to load into the tool.

Click Return to Config Setup when finished

Next, Click Extract Destination Path

Extract Setup- Set the destination path for the error log extracts here. A reference to new error log extracts should be added here.

	errorlogname	destinationpath	description
▶	d_datacheck_distinct_val	Z:\VDC\ISUxxx_xxSU	Frequency List of Records in Non-Enumerated Text Fields Base
	d_errors	Z:\VDC\ISUxxx_xxSU	Bad Enumeration in Extract
	d_errors_dupes	Z:\VDC\ISUxxx_xxSU	Exact or Logical Duplicate Records
	d_errors_orphans	Z:\VDC\ISUxxx_xxSU	Child Records without Corresponding Parent Record
	d_errors_without_children	Z:\VDC\ISUxxx_xxSU	Parent Records without Corresponding Child Records
*			

Record: 1 of 5

Return to Config Setup

Return to Main Menu

Change the destination path for your SU/SD

Click the Return to Config. Setup

Optional Configuration Information

Click the Report Control Button – Optional OR Click the Return to Main Menu Button

Report Setup- Select the reports you would like to include as default from the Main Menu reports button. Change the print order here too.

	reportName	PrintOrde	printme	Description
▶	rpt_Bad_Enumerations	2	<input checked="" type="checkbox"/>	Due to Bad Enumerations
	rpt_d_datacheck_distinct	6	<input checked="" type="checkbox"/>	Frequency List of Records in Non Enumeration Text Fields E
	rpt_d_errors_without_chilc	5	<input checked="" type="checkbox"/>	Records without Corresponding Child Records
	rpt_DuplicateRecords	3	<input checked="" type="checkbox"/>	Due to Exact or Logical Duplicates
	rpt_OrphanRecords	4	<input checked="" type="checkbox"/>	Child Records without Corresponding Parent Record
	rpt_qry_errortots	1	<input checked="" type="checkbox"/>	A Summary of Errors by Type
*		0	<input type="checkbox"/>	

Record: 1 of 6

Return to Config Setup

Return to Main Menu

Select which reports to print and the order in which to print them

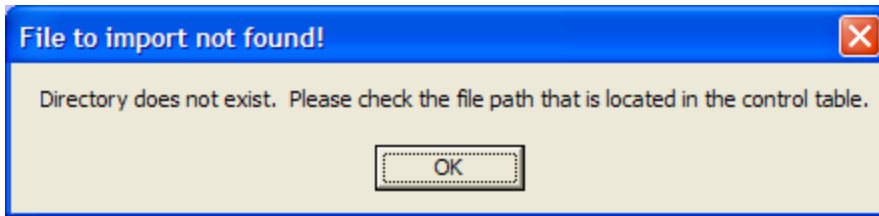
Click the Return to Main Menu Button

Click on the Import Data button



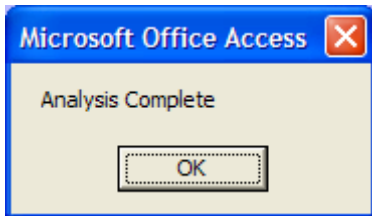
Click OK

If you see this window



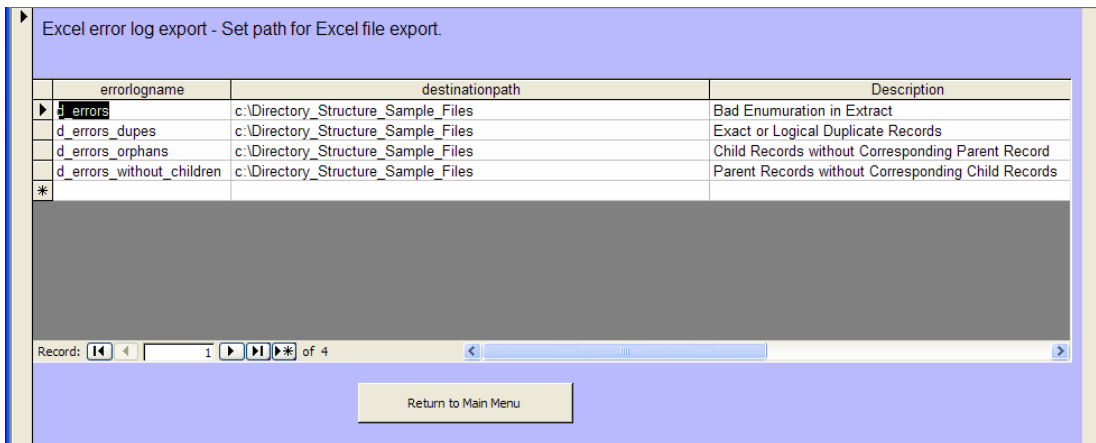
Return to the Extract Destination Path window and check the path entries

Click on the Analyze Data button



Skip one button and Click the Extract Error Log Path Button

Enter the correct path for the error log files into the destinationpath column.



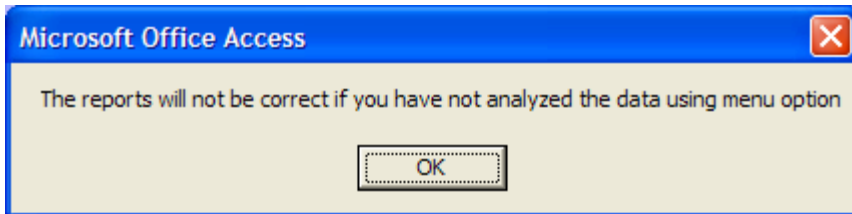
Click return to Main Menu

Click on the Extract Error Logs to Excel

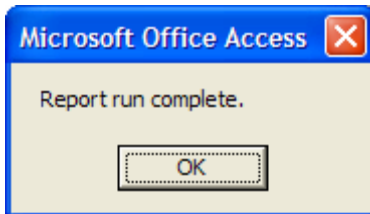
The files are automatically created in the designated directory



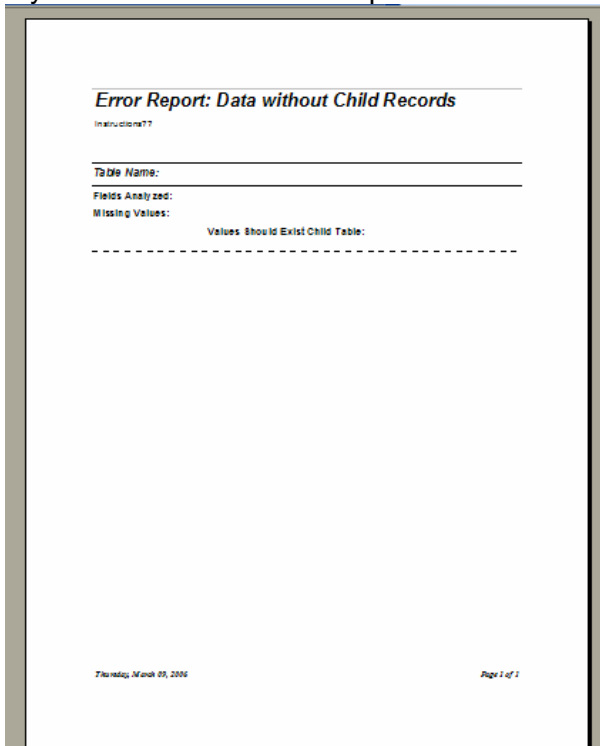
Click the Access Report of Error Logs to generate the printable reports  
A warning dialog box appears to remind you to analyze before generating the error logs



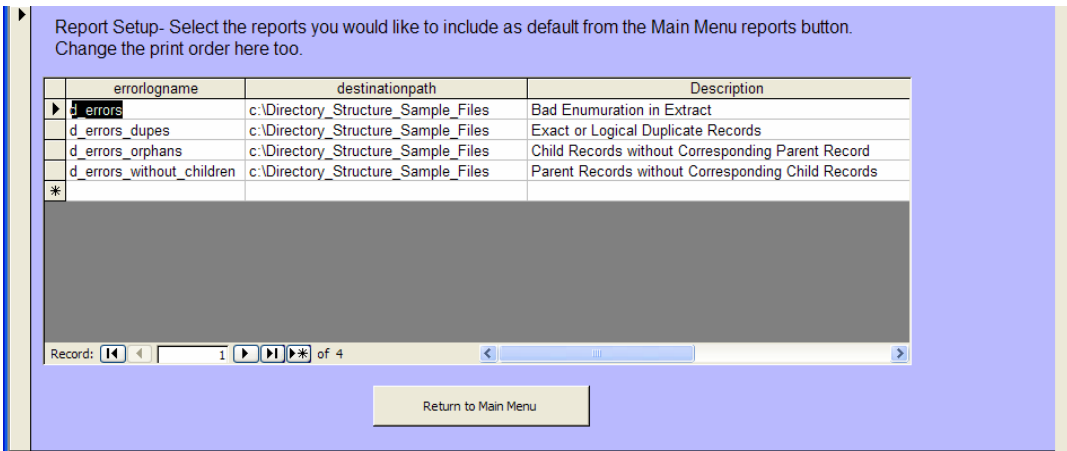
When the logs have been generated a confirmation box appears



If you check the Preview Reports check box each report will be created in a different preview screen



Click on the Report Control Table button to select default reports

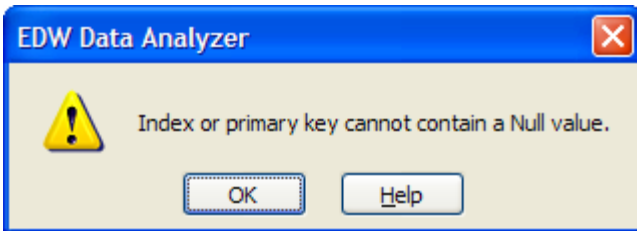


Click the Exit Application button to close the DEA tool

Errors

Extract Error Logs to Excel

If you try to uncheck the last record or accidentally add a new blank record you will get the following error



Type something in the ObjectName field of this blank record and go to Edit > Delete Record to remove the record

School's

This error occurred with some test survey data which contained an apostrophe in one of the questions

